

# ASEPTIQUIK® W SERIES CONNECTORS

**Genderless AseptiQuik® W Series Connectors** with nominal 1 ½" flow path enable quick and easy sterile connections, in large-volume, high-flow production and process intensification environments. The genderless design simplifies system integration and minimizes the risk of operator error. The connectors' robust construction provides reliable performance without the need for clamps or fixtures. Biopharmaceutical manufacturers benefit from interchangeable 1", 1 ¼", and 1 ½" termination sizes for full-scale bioprocessing production environments with the quality and market availability they expect from the leader in the single-use connection technology.

## SPECIFICATIONS

### OPERATING PRESSURE

Up to 60 psi, 4.1 bar

Up to 75 psi, 5.1 bar for 48 hours

### OPERATING TEMPERATURE

34°F to 104°F (1°C to 40°C)

### STERILIZATION

#### Standard (blue) Version:

Gamma: up to 50 kGy

#### High Temperature (white) Version:

Gamma: up to 50 kGy

Autoclave: Up to 266°F (130°C) for 60 minutes

### TERMINATIONS

1", 1 ¼", 1 ½" Hose barb, 1 ½" Sanitary  
(25.4mm, 31.75mm, 38.1mm, 38.1mm)

### MATERIALS

#### Main components:

Polycarbonate (white)

#### Shipping Clip:

Polycarbonate (clear)

#### Side latch:

Polyphenylsulfone (blue)

#### Pull Tabs/Caps:

Polycarbonate (white: high temp;  
blue standard temp version)

#### Pull Tab Guide:

Polyphenylsulfone (gray)

#### Seals:

Silicone (clear), platinum-cured

#### Membrane:

Hydrophobic Polyethersulfone (HT version),  
Polyethylene (standard version)  
PTFE strip sticker (both versions)

**WARNING:** Pressure, temperature, chemicals, and operating environment can affect the performance of couplings. It is the customer's responsibility to test the suitability of CPC's products in their own application conditions.

### FEATURES

Genderless

FLIP - CLICK - PULL - SNAP

Secure Side Latches

Membrane Pull Tabs

No Secondary Component Needed

Largest AseptiQuik Flow Diameter  
(1 ½" Nominal Flow Path)

### BENEFITS

Eases single-use systems specifications with one-part number for both halves

Intuitive four-step connection process reduces risk of operator error

Increases connector robustness for wide variety of applications

Enables simultaneous and secure removal of both membranes

No need to purchase and store extra materials or tools to complete your sterile connection process

Move liquid medias faster to increase process efficiency

## TYPICAL FLOW RATE

**Cv Value Range:** 39-118 for AseptiQuik W

Cv values represent the approximate expected flow rate in gallons per minute of water at room temperature for a 1 PSI pressure drop. The flow is generally constrained by the smallest diameter, which in some cases will be the termination diameter and not the Nominal Flow Path.

## NOTE

Validation and Extractables data can be requested at  
[cpcworldwide.com/AseptiQuik-W](http://cpcworldwide.com/AseptiQuik-W)

Scan code to visit webpage



[cpcworldwide.com/AseptiQuik-W](http://cpcworldwide.com/AseptiQuik-W)



#### COLDER PRODUCTS COMPANY

U.S.A.

PHONE: +1 (651) 645-0091

TOLL FREE: +1 (800) 519-7633

E-MAIL: [info@cpcworldwide.com](mailto:info@cpcworldwide.com)

#### COLDER PRODUCTS COMPANY GMBH

Germany

E-MAIL: [cpcgmbh@cpcworldwide.com](mailto:cpcgmbh@cpcworldwide.com)

#### DOVER (SHANGHAI) INDUSTRIAL CO., LTD

ShangHai, China

PHONE: +86 21 2411 2666

TOLL FREE: +86 400 990 1978

E-MAIL: [asiapacific@cpcworldwide.com](mailto:asiapacific@cpcworldwide.com)

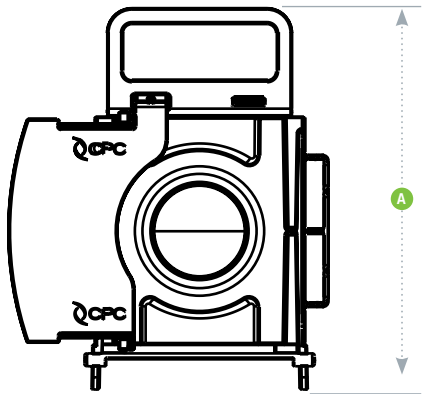
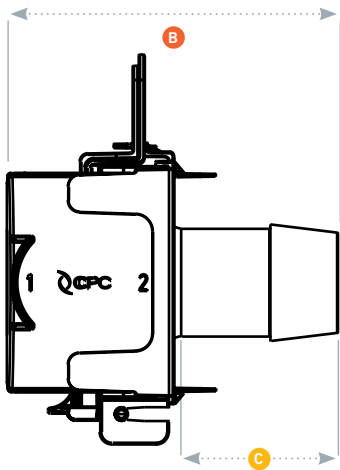
# ASEPTIQUIK® W SERIES DIMENSIONS

POLYCARBONATE WHITE AND BLUE PULL TABS - For autoclave or gamma irradiation applications.



TERMINATION	METRIC EQ.	PART NO.	A	B	C
1" HOSE BARB	25.4 mm	AQW17016HT AQW17016	5.77" (146.6 mm)	4.00" (101.6 mm)	1.51" (38.4 mm)
1 1/4" HOSE BARB	31.8 mm	AQW17020HT AQW17020	5.77" (146.6 mm)	4.39" (111.5 mm)	1.91" (48.5 mm)
1 1/2" HOSE BARB	38.1 mm	AQW17024HT AQW17024	5.77" (146.6 mm)	4.91" (124.7 mm)	2.42" (61.5 mm)
1 1/2" SANITARY	38.1 mm	AQW33024HT AQW33024	5.77" (146.6 mm)	3.66" (93.0 mm)	1.17" (29.7 mm)

## PRODUCT DIMENSIONS



- A = Height/Diameter
- B = Total Length
- C = Hose Barb Length

# ASEPTIQUIK® W ASSEMBLY PROCEDURE

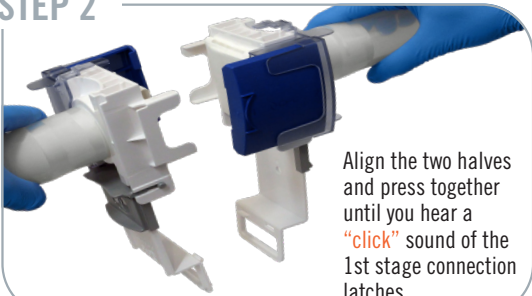
## STEP 1

Flip the pull tab down while disengaging it from the shipping clip until fully open and clicked into place



## STEP 2

Align the two halves and press together until you hear a "click" sound of the 1st stage connection latches



## STEP 3

Pull the membranes by placing one hand in the handle of the pull tabs and the other hand on the termination (Option 1) OR the pull tab guides (Option 2). (Ensure Step 3 is completed prior to moving to Step 4)



## STEP 4

Remove the clear shipping clips then Snap side "1" first, followed by side "2" on each side latch and confirm they are attached to the body



Scan code to watch AseptiQuik W assembly video



cpcworldwide.com/AQWassembly